

Finned Tube Heaters **RiRo-f** for rooms with fire-risk

The economic choice for rooms where a "full range" heating is not needed, e.g. to protect your rooms or your valuable facilities against frost. To keep below the reduced surface temperature of 115°C we chose appropriate power layout.
Applicable for rooms with risk of fire.



Suitable accessories, page 17+18



max. 115°C Hight 170mm Widh 130mm Diameter Ø110mm Prot. Mode IP66/IP67

Power W with 230 V \cong 400 V 3 ~ 400 V 3 N ~	Length mm	Weight kg	Order number
120*	440	3,1	F 0120E
600	1040	7,7	F 0600E
935	1440	10,6	F 0935E
1200	1840	13,7	F 1200E

*only 230 V \cong



Finned Tube Heaters **RiRo-fa** for rooms with fire-risk - automatic

The heater RiRo-fa is identical with type RiRo-f, but additionally heat transfer can be controlled steplessly by our built-in thermostat. According to your needs the heater will keep the room frost-protected or the temperature will be kept constant at your choice between + 5°C and + 30°C. The red signalling light shows when power is on.
Applicable for rooms with risk of fire.

● = frost-free ☺ = + 5° C to + 30° C



Suitable accessories, page 17+18



Adjustment + 5° C to + 30° C

max. 115°C Hight 170mm Widh 130mm Diameter Ø110mm Prot. Mode IP66/IP67

Power W with 230 V ~	Length mm	Weight kg	Order number
120	440	3,1	FA 0120E
600	1040	7,7	FA 0600E
935	1440	10,9	FA 0935E
1200	1840	13,7	FA 1200E

High grade stainless steel type 1.4512. Also available: Type 1.4571



Finned Tube Heaters **RiRo-nt** with low surface temperature

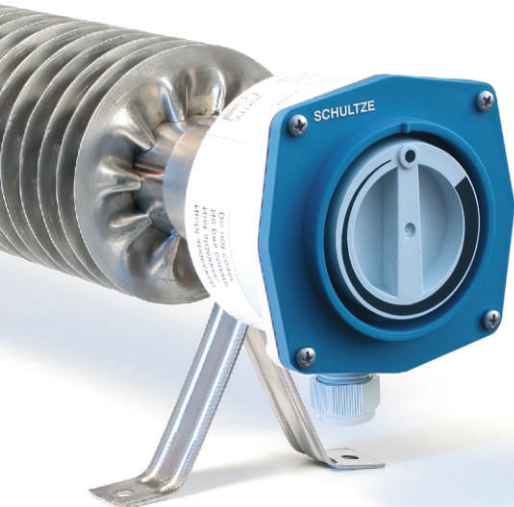
With these heaters the excess temperature touching the top of the fins does not exceed 67K (difference of 67°C to room temperature). With our new models we could increase the delivery of power due to technical improvements that do not result in the loss of protection. So our customers will get more heat for the same price! For completion, we recommend our new easy to use protection baskets. Applicable for rooms with risk of fire.

Suitable accessories, page 17+18



67 K High 170mm Width 130mm Diameter Ø 110mm Prot. Mode IP 66/IP 67

Power W with 230 V \approx	Length mm	Weight kg	Order number
500	1040	7,5	NT 0500E
800	1440	10,4	NT 0800E
1000	1840	13,7	NT 1000E



Finned Tube Heaters **RiRo-nta** with low surface temperature - automatic

The construction of RiRo-nta is identical with RiRo-nt except for the fact that heating power can be steplessly regulated by our built-in thermostat. It keeps the temperature of your choice constant between +5°C and + 30°C or just protects your room from frost. The red signalling light shows when power is on. Applicable for rooms with risk of fire.

● = frost-free ◡ = + 5° C to + 30° C

Suitable accessories, page 17+18



Adjustment + 5° C to + 30° C

67 K High 170mm Width 130mm Diameter Ø 110mm Prot. Mode IP 66/IP 67

Power W with 230 V \sim	Length mm	Weight kg	Order number
500	1040	7,5	NTA 0500E
800	1440	10,9	NTA 0800E
1000	1840	13,7	NTA 1000E

High grade stainless steel type 1.4512. Also available: Type 1.4571